

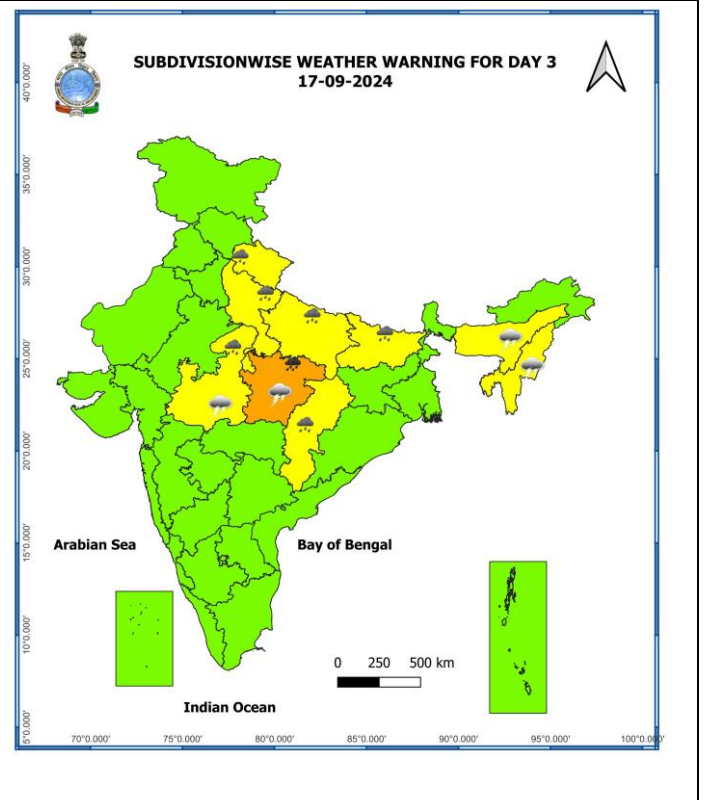
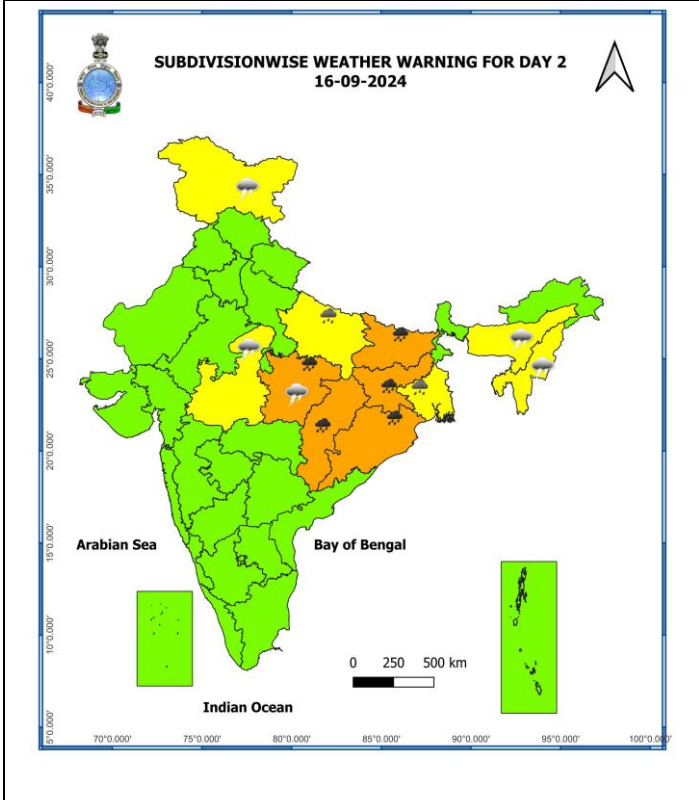
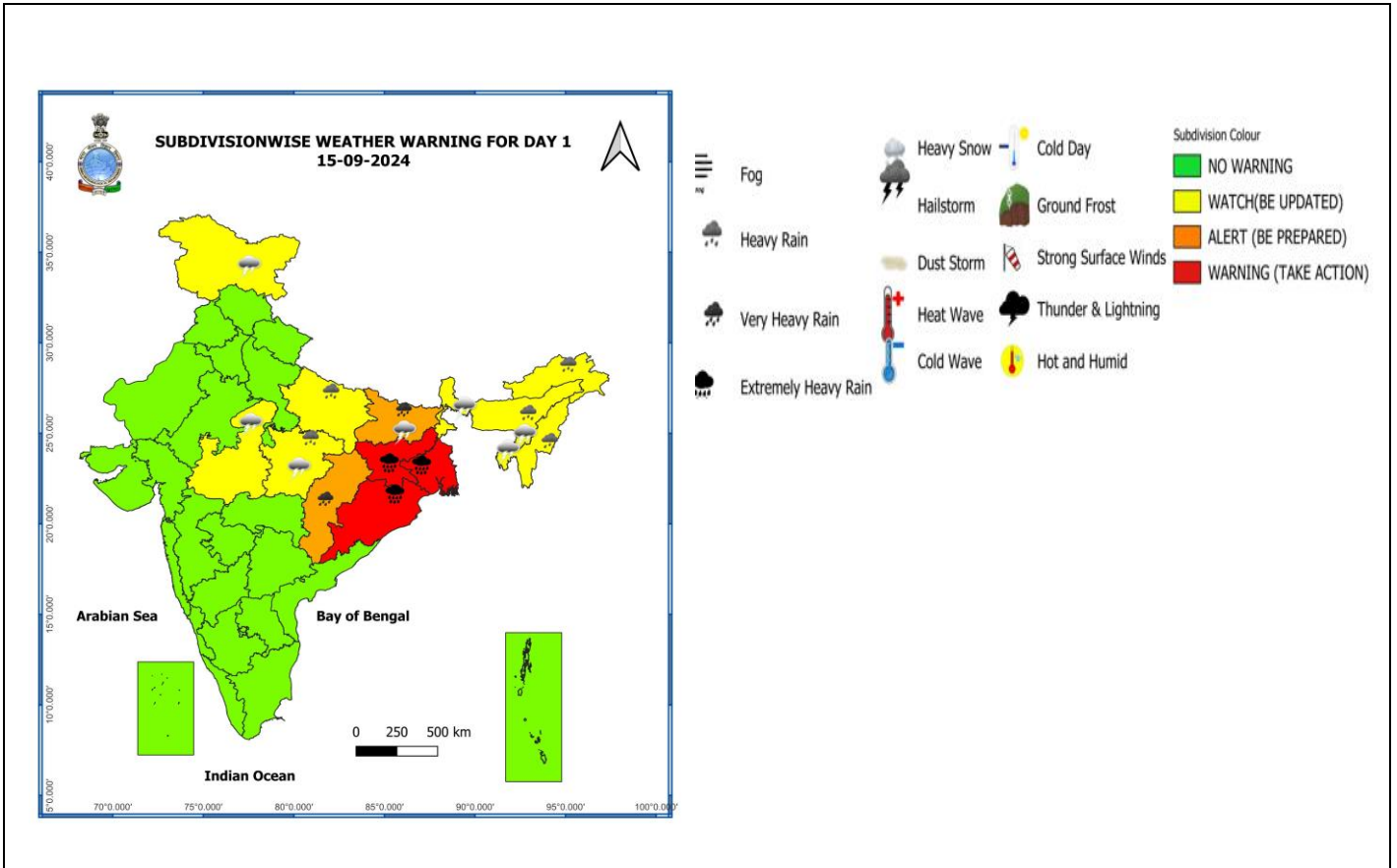
Heavy Rainfall Warning Based on 0600 UTC of 15th September, 2024

- **Gangetic West Bengal (including Kolkata):** Light to moderate rainfall at most places is very likely with **heavy to very heavy rainfall** at few places over Gangetic West Bengal and **extremely heavy rainfall** at isolated places over south Gangetic West Bengal on 15th; **heavy rainfall** at isolated places on 16th September.
- **Sub-Himalayan West Bengal:** Light to moderate rainfall at most places is very likely with **heavy rainfall** at isolated places on 15th September.
- **Odisha:** Light to moderate rainfall at most places is very likely with **heavy to very heavy rainfall** at a few places over Odisha and **extremely heavy rainfall** at isolated places over north Odisha on 15th and **heavy to very heavy rainfall** at isolated places on 16th September.
- **Jharkhand:** Light to moderate rainfall at most places with **heavy to very heavy rainfall** at isolated places and **extremely heavy rainfall** over south Jharkhand on 15th and **heavy to very heavy rainfall** at isolated places over Jharkhand 16th September.
- **Bihar:** Light to moderate rainfall at most places with **heavy to very heavy rainfall** at isolated places very likely on 15th & 16th and **heavy rainfall** at isolated places over Bihar 17th September.
- **Chhattisgarh:** Light to moderate rainfall at most places with **heavy to very heavy rainfall** at a few places on 15th & 16th September and heavy rainfall at isolated places on 17th September.
- **Madhya Pradesh:** Light to moderate rainfall at most places with **heavy rainfall** at isolated places on 15th, 16th & **heavy to very heavy rainfall** at isolated places on 17th September over East Madhya Pradesh. Light to moderate rainfall at many places with **heavy rainfall** at isolated places on 17th September over northwest Madhya Pradesh.
- **Uttar Pradesh:** Light to moderate rainfall at many places with **heavy rainfall** at isolated places over southeast Uttar Pradesh on 16th and over South Uttar Pradesh on 17th & 18th September.
- **Mizoram & Tripura:** Light to moderate rainfall at most places is very likely with isolated **heavy rainfall** during 15th -16th September.
- **Assam & Meghalaya:** Light to moderate rainfall at many places is very likely with isolated **heavy rainfall** on 15th September.

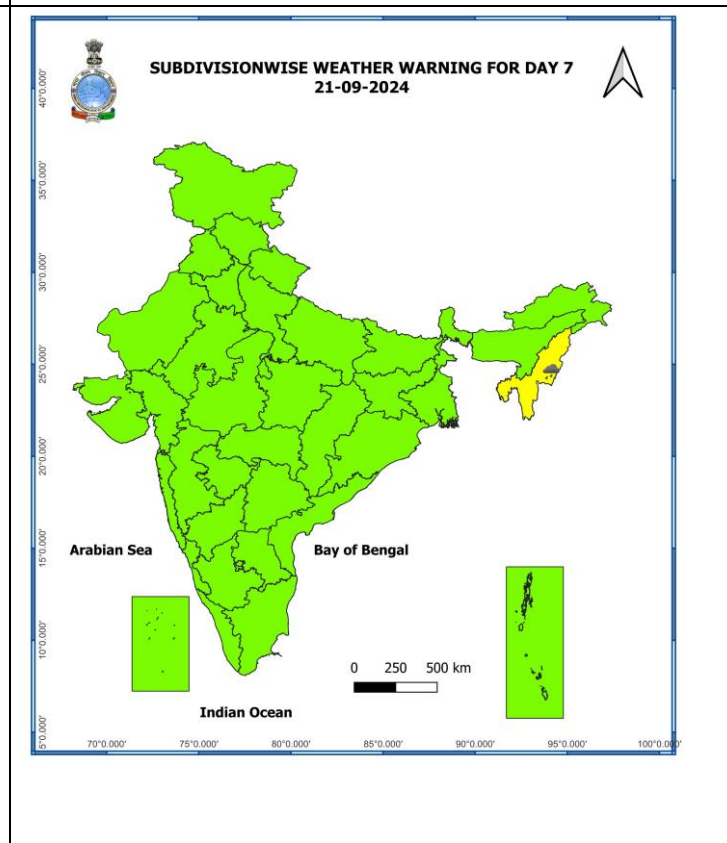
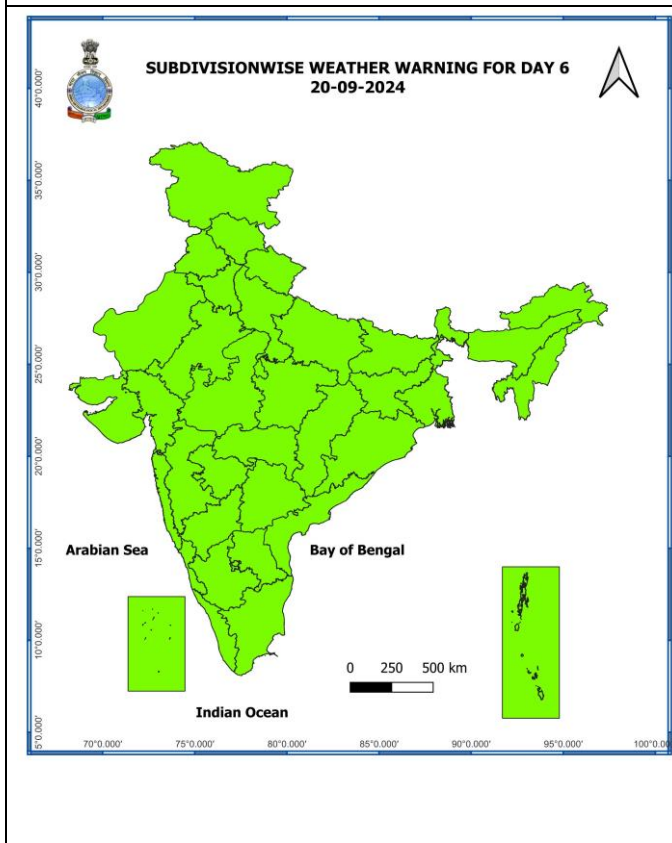
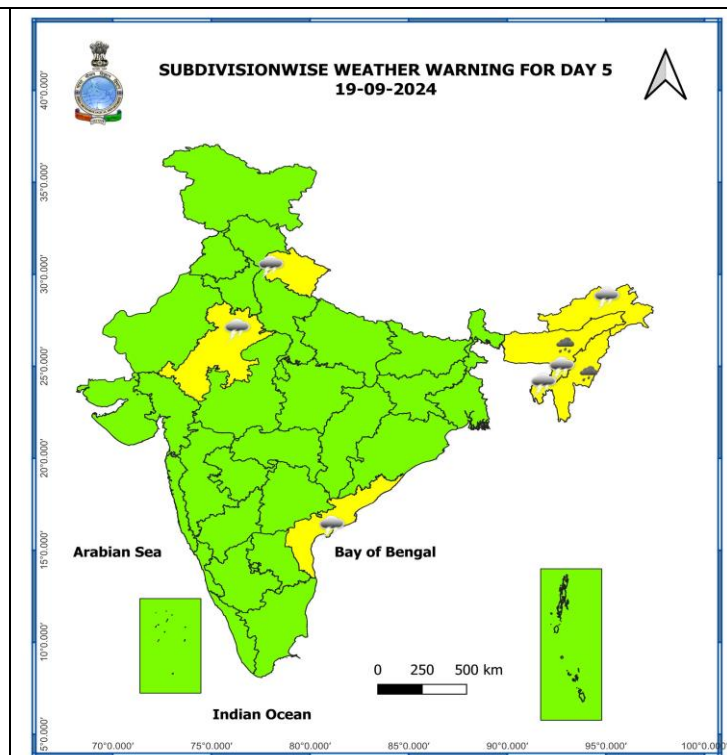
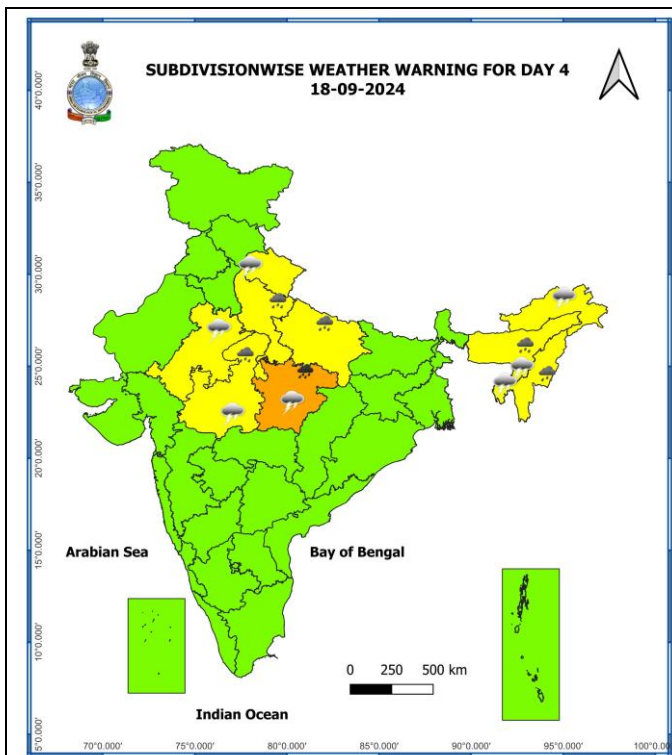
Spatial rainfall distribution: Isolated: <25%, A few: 26-50%, Many: 51-75%, Most: 76-100%

Rainfall amount (mm): Heavy rain: 64.5 – 115.5, Very heavy rain: 115.6 – 204.4, Extremely heavy rain: 204.5 or more.

Warning Graphics



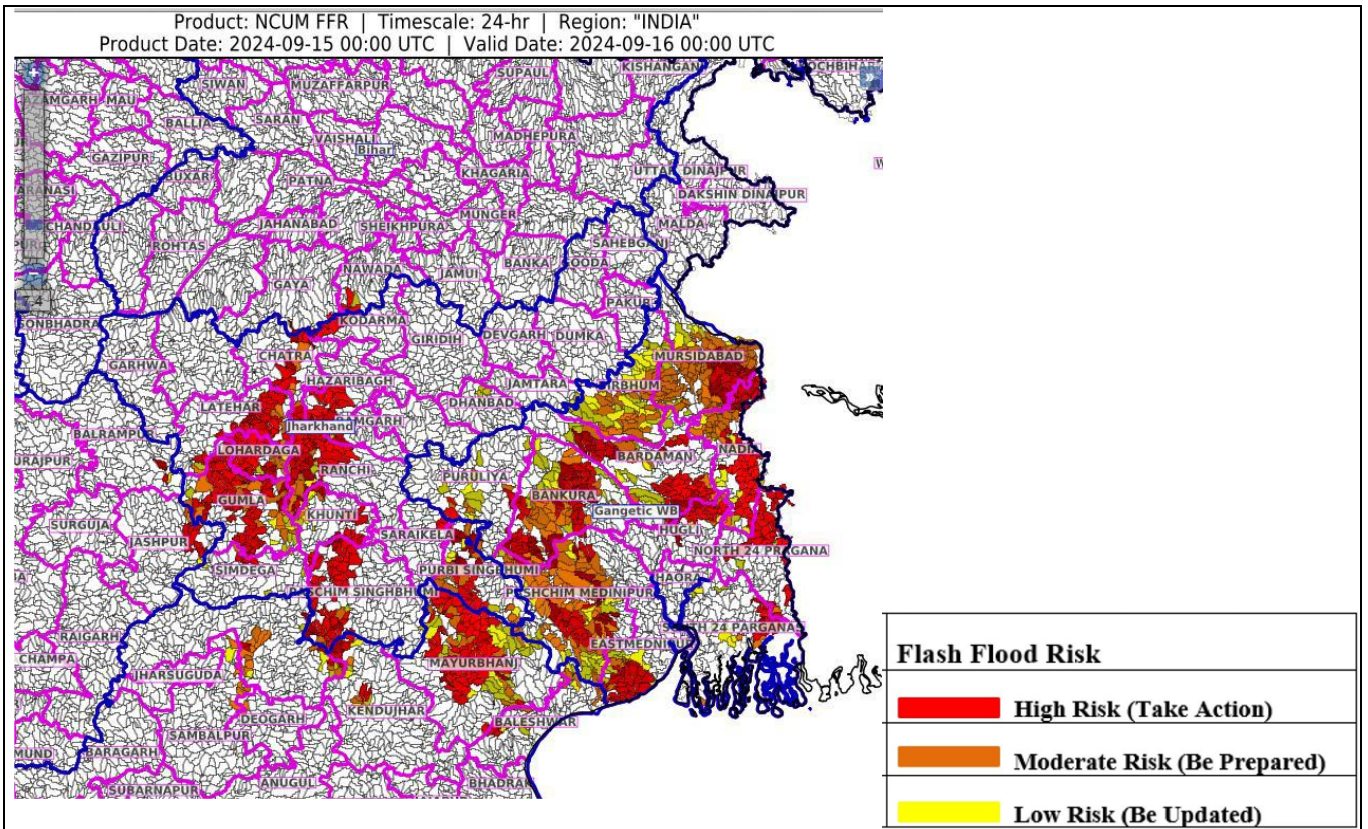
Spatial rainfall distribution: Isolated: <25%, A few: 26-50%, Many: 51-75%, Most: 76-100%
Rainfall amount (mm): Heavy rain: 64.5 – 115.5, Very heavy rain: 115.6 – 204.4, Extremely heavy rain: 204.5 or more.



- Action may be taken based on **ORANGE AND RED** COLOUR warnings.
- Vulnerable regions likely urban and hilly areas action may be initiated for heavy rainfall warning.
- As the lead period increases forecast accuracy decreases

Spatial rainfall distribution: Isolated: <25%, A few: 26-50%, Many: 51-75%, Most: 76-100%
 Rainfall amount (mm): Heavy rain: 64.5 – 115.5, Very heavy rain: 115.6 – 204.4, Extremely heavy rain: 204.5 or more.

Flash Flood Guidance



24 hours Outlook for the Flash Flood Risk (FFR) till 0530 IST of 16-09-2024:

Low flash flood risk likely over few watersheds & neighbourhoods of following Met Sub-division during next 24 hours.

Odisha - Baleshwar, Deogarh, Kendujhar, Mayurbhanj and Sundargarh districts.

Gangetic West Bengal - Bankura, Bardhaman, Birbhum, East & West Mednipur, Hoogly, Murshidabad, Nadia, North & South 24 Praganas and Puruliya districts.

Jharkhand - Chatra, East Singhbhum, Gumla, Hazaribagh, Khunti, Koderma, Latehar, Lohardaga, Ramgarh, Ranchi, Saraikela, Simdega and West Singhbhum districts.

Surface runoff/ Inundation may occur at some fully saturated soils & low-lying areas over AoC as shown in map due to expected rainfall occurrence in next 24 hours.

Spatial rainfall distribution: Isolated: <25%, A few: 26-50%, Many: 51-75%, Most: 76-100%

Rainfall amount (mm): Heavy rain: 64.5 – 115.5, Very heavy rain: 115.6 – 204.4, Extremely heavy rain: 204.5 or more.